

State of Wyoming Corner Record

(In compliance with the CORNER PERPETUATION AND FILING ACT, Wyoming Statutes, 1997 Section 33-29-140, et. seq., and the Rules and Regulations of the Board of Professional Engineers and Professional Land Surveyors)

Reverse side of this form may be used if more space is needed.

Record of original survey and citation of source of historical information (If corner is lost or obliterated), Description of corner monumentation evidence found and/or monument and accessories established to perpetuate the location of this corner. Sketch of relative location of monument, accessories and reference points with the course and distance to adjacent corner(s) (if determined in this survey). Method and rationale for re-establishment of lost or obliterated corner.

RECOVERED AN 8"X8"X8", ABOVE GROUND, SET AND MARKED GRANITE STONE.

LAT = 41°19'11.003"N

LONG = 104°47'53.885"W

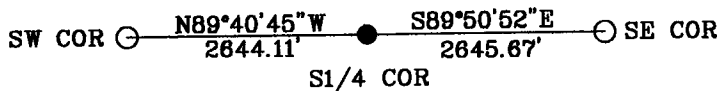
Monument Location

Monument Inscription



SECTION 29

Not To Scale



LATITUDE AND LONGITUDE NOT REFERENCED TO CORS STATION

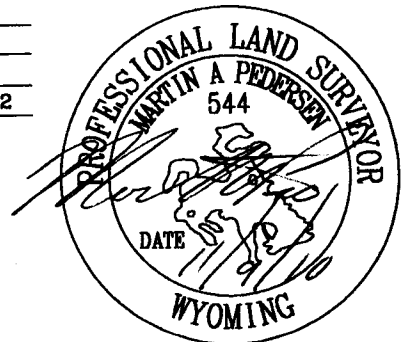
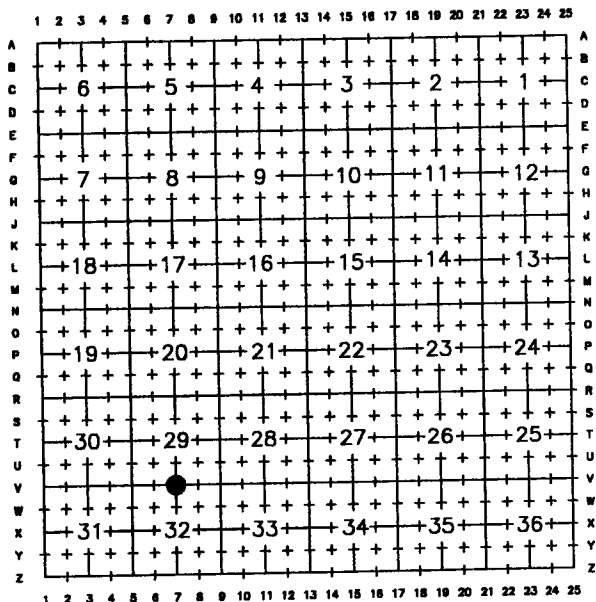
Date of Field Work: 10/8/2010 Office Reference: 13985

Firm/Agency, Address

This corner record was prepared by me or under my direction and supervision.

Cross Index Diagram

WLC Engineering, Surveying, & Planning
1015 Harshman St.
P.O. Box 1104
Rawlins, Wyoming 82301
Telephone Number: (307) 324-5282



RECORDED 11/10/2010 AT 3:42 PM REC# 556932 BK# 2192 PG# 1150
 DEBRA K. LATHROP, CLERK OF LARAMIE COUNTY, WY PAGE 1 OF 1

Corner Name S1/4 Section 29, T 16 N, R 66 W, 6th P.M. Cross-Index No.: V-11
 County: LARAMIE, Wyoming